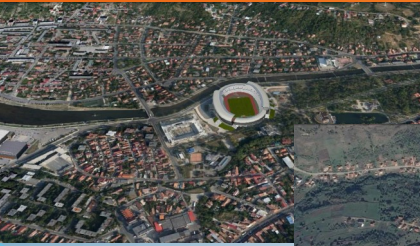




BABEȘ-BOLYAI UNIVERSITY | FACULTY OF GEOGRAPHY



CENTRE FOR REGIONAL GEOGRAPHY

**A Decade of Research
2004 - 2014**





DIRECTOR

Professor Pompei COCEAN, PhD

ACCREDITATION AND AWARDS

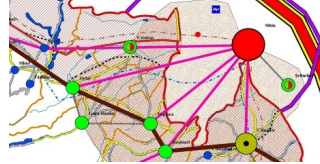


The Centre for Regional Geography is accredited by the National University Research Council (CNCSIS) and is issued the *Certificate of Accreditation* no. 32 - CC-C/11.05.2004.



In 2010, the *Spatial Planning Research Group* within the Centre for Regional Geography was awarded the *Certificate of Excellence* by Babeş-Bolyai University for its professional activity in research and services.





ABOUT US

Main objectives

- **Elaboration of spatial development strategies** at different scales and complexity levels (local, microregional, zonal, cross-border, regional, transnational)
- **Elaboration of microregion and zonal spatial plans**
- **Analysis of regional disparities**
- **Training of young researchers** (Master's and doctoral students, researchers) by engaging them in the genuine research activity



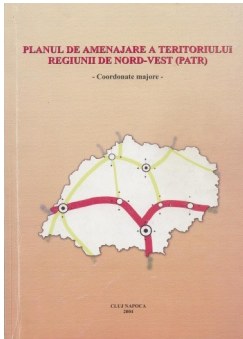
BABEŞ-BOLYAI UNIVERSITY | FACULTY OF GEOGRAPHY

5-7 CLINICILOR STREET, CLUJ-NAPOCA, 400006, ROMANIA

Tel./fax: + 40 264 597 570 | E-mail: cgr@geografie.ubbcluj.ro | <http://centre.ubbcluj.ro/cgr>



A TASTE OF WHAT WE DO

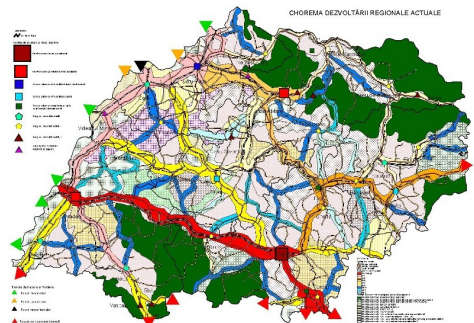
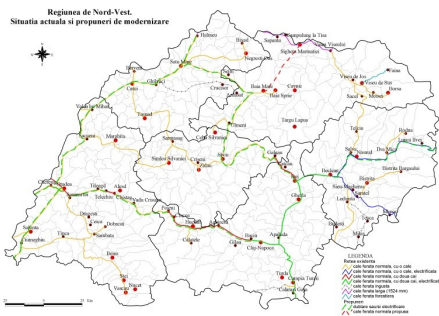


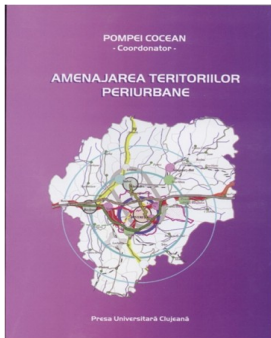
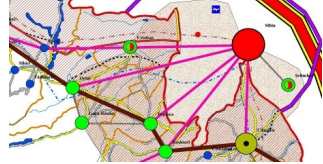
North-West Region Spatial Plan. Major Coordinates

2000-2003

Beneficiaries: Bihor County Council, Bistrița-Năsăud County Council, Cluj County Council, Maramureș County Council, Satu Mare County Council, Sălaj County Council, North-West Regional Development Agency

The comprehensive and complex analysis of **the regional territory**, illustrated in this case for the North-West Development Region, becomes a conglomerate of immediate, practical solutions, but also a pattern for the subsequent planning activities. The detailed knowledge of the territory, the spatial vision that emerges from the pages of this book and the identification of the interrelations between the different components of the region (technical infrastructure, competitive economic aspects, complex social and human resources, and state of the environment) are conditions for the success of this planning model.



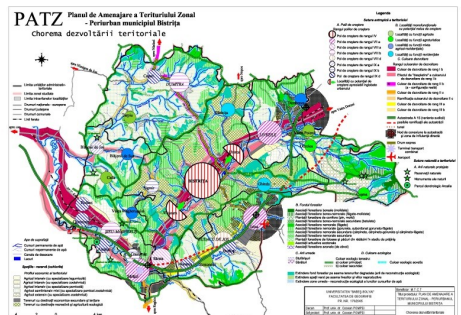
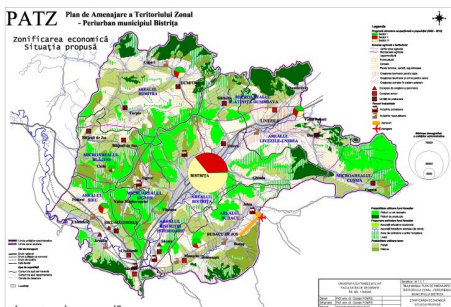


Peri-urban Spatial Planning. Case Study: Bistrița Peri-urban Area

Beneficiary: Ministry of Transport,
Construction and Tourism

2005

The introspections meant to examine the “status” of a territory in order to elaborate sustainable development strategies have different degrees of complexity, in close correlation to the size of the spatial entity under analysis (region, area, site) and to the diversity of levels that interface. The planning study, here applied to a special territorial structure, extremely widespread and characteristic, known as **peri-urban area**, has the purpose, no matter of its location (in this case, the peri-urban area of Bistrița), to emphasize the development potential of the respective area, indispensably taking into account, as a *sine qua non* condition, the current status, together with the emphasis of the existent dysfunctions. The importance and the viability of this planning study is concentrated into the accuracy of highlighting the structure and the functions of the peri-urban territorial system and of elaborating those sectoral development strategies able to activate the entire potential of the area and to transform it into a competitive player on the regional, national or international market, in an as short time as possible.

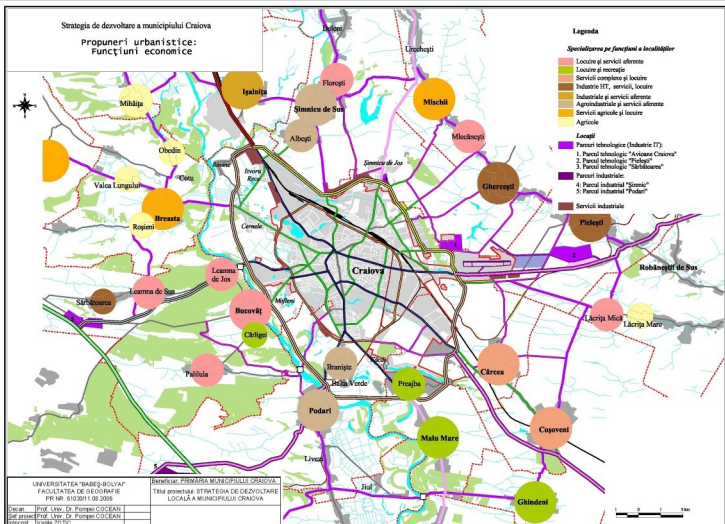
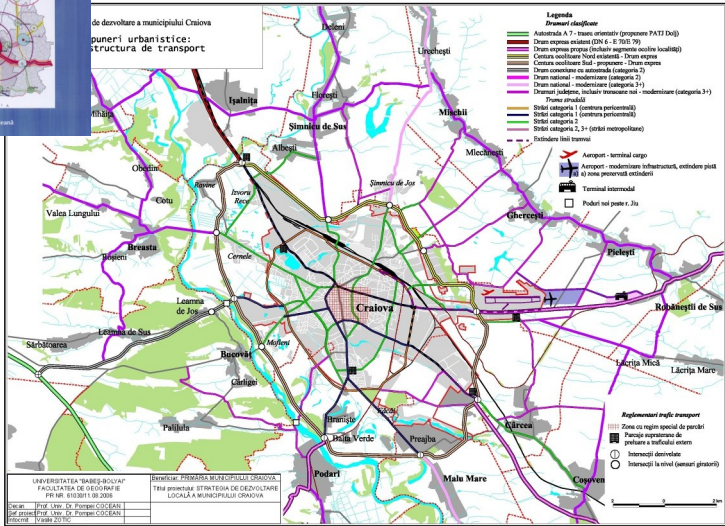


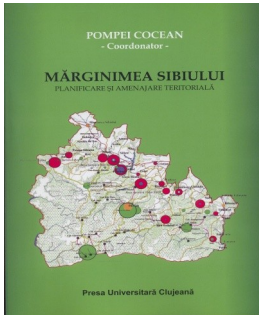
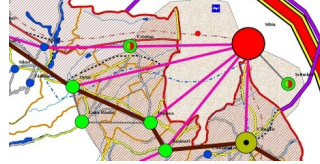


Urban Development Strategies. Case Study: Craiova City

2006

Beneficiary: Craiova City Mayor's Office



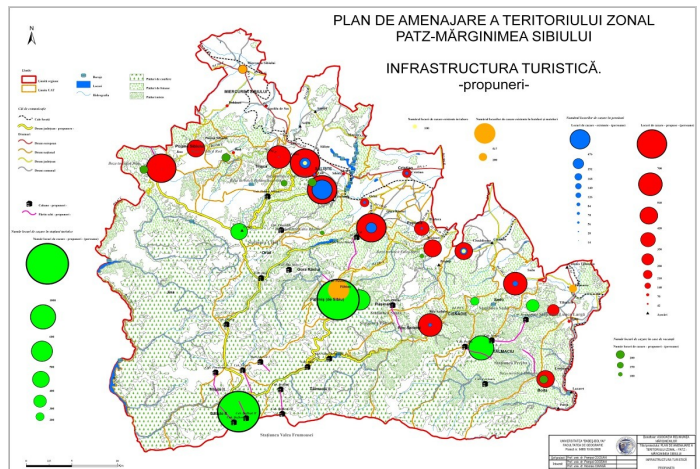
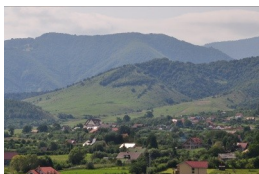


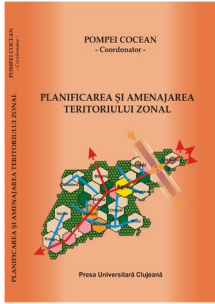
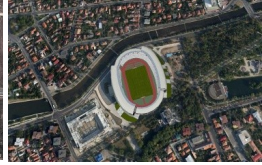
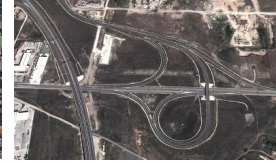
Zonal Spatial Plan – Mărginimea Sibiului

2009

Beneficiary: Reuniunea Mărginenilor Association

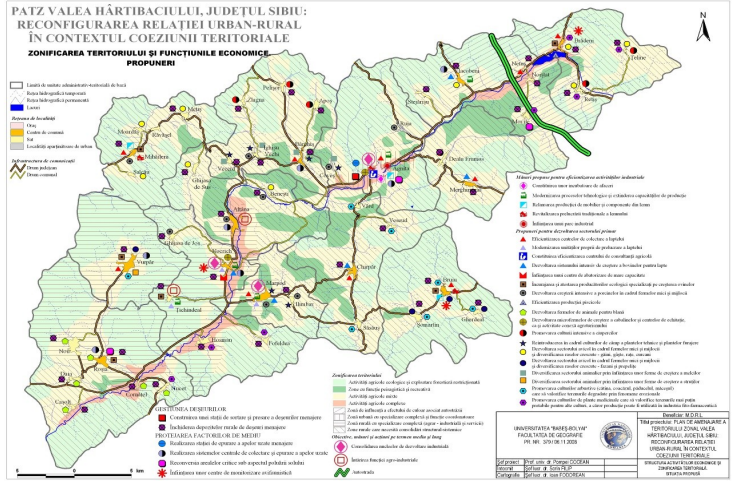
Mărginimea Sibiului, as optimal framework for the manifestation of territorial cohesion due to the presence of a clearly outlined mental space, represents a spatially well-defined region located in the middle of Romania, which can benefit by all the necessary levers for becoming a genuine programme region. Having as starting point an objective analysis of the present state, including the natural and human resources, as well as the technical infrastructures of the territory, social, economic, and environmental aspects, all seen from the dysfunctions viewpoint, this territorial unit responds to the beneficiaries' necessity, to the needs of the local community in the first place, by formulating several practical and strategic objectives, meant to solve the dysfunctions of Mărginimea Sibiului.





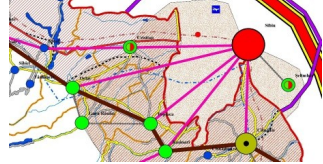
Zonal Spatial Plan of the Hârtibaciu Valley, Sibiu County. Reconfiguration of the Urban-Rural Relationship in the Context of Territorial Cohesion

Beneficiary: Ministry of Regional Development and Housing



2009

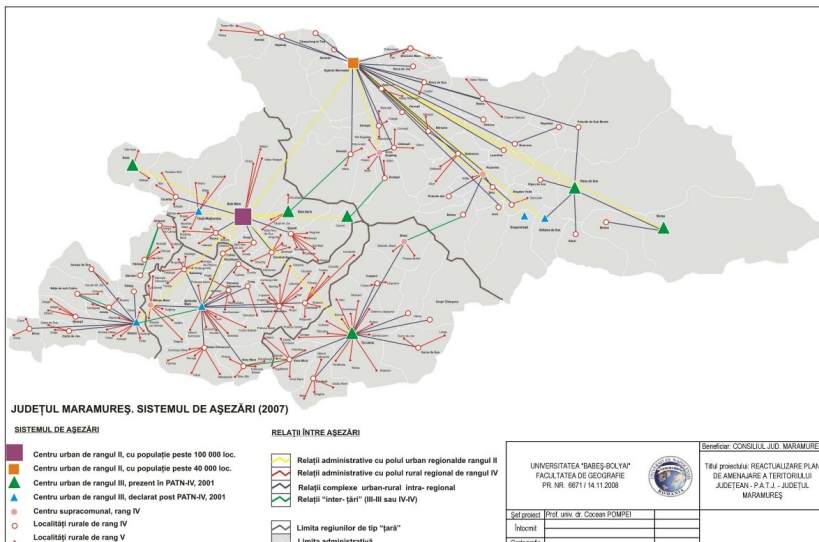
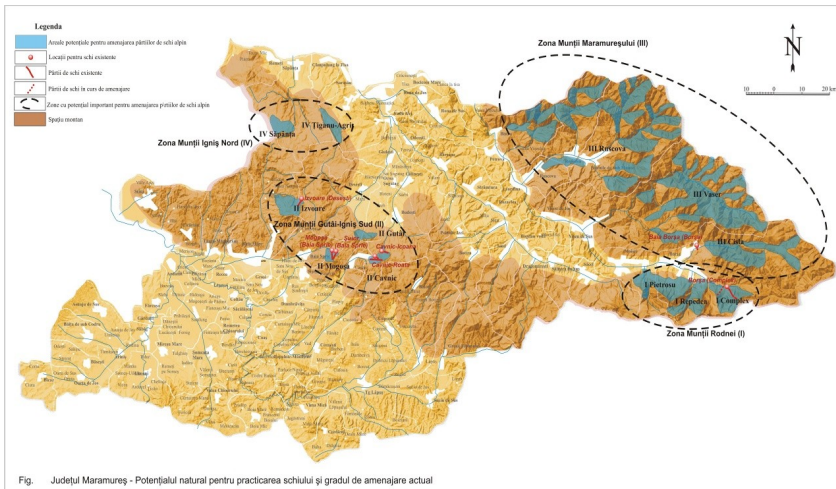
Situated right in the heart of Romania, the Hârtibaciu Valley is characterized, contrary to the positional advantages available, by an increased ruralism, becoming a territory of profound isolation. In addition, the individualisation of a mental space of its own, the superposition over the Hârtibaciu Plateau, defined by the presence of protected areas, or the local community initiatives to set up a socio-economic development micro-association to serve their interests represent the main premises for supporting this zonal territory to become a programme region. The study has obstinately aimed at going beyond the current territorial state and at presenting, in a justified and objective manner, a set of directions, individualized for the main key areas (environment, social and human resources, economy, technical infrastructure, settlement network, built heritage, etc.).

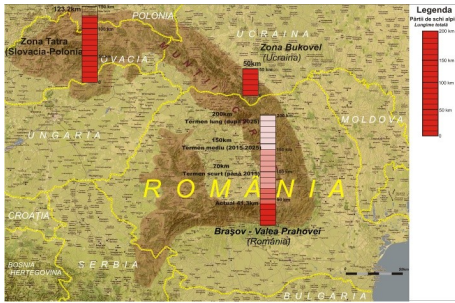


Update to the County Spatial Plan – Maramureș County

2009

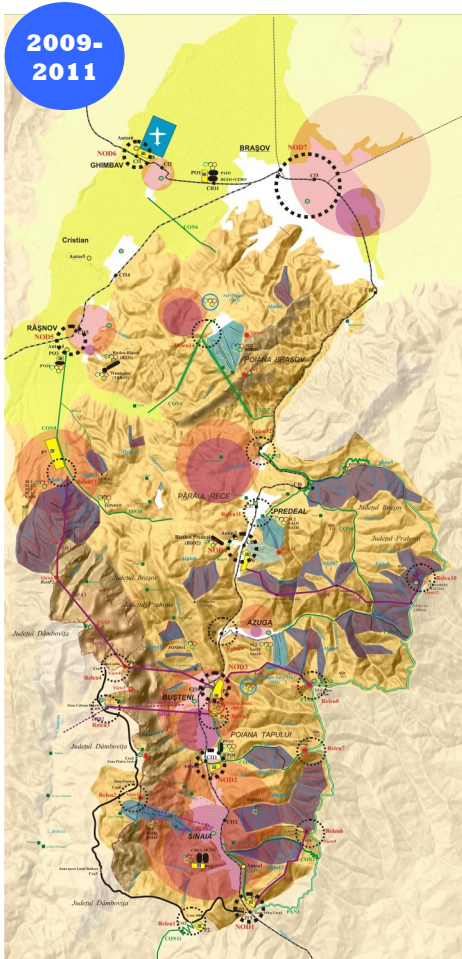
Beneficiary: Maramureș County Council

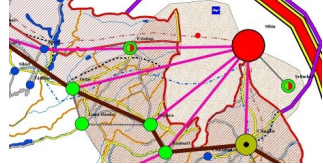




Sinaia - Azuga - Buşteni - Predeal - Râşnov - Braşov - Poiana Braşov Intermunicipal Spatial Plan

Beneficiary: Ministry of Regional
Development and Housing





SOUTH EAST EUROPE
Transnational Cooperation Programme



TICAD
TISA CATCHMENT AREA DEVELOPMENT



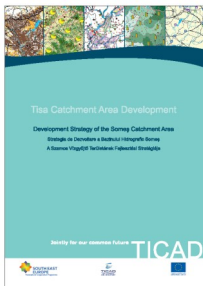
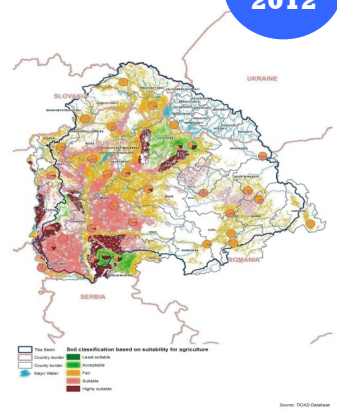
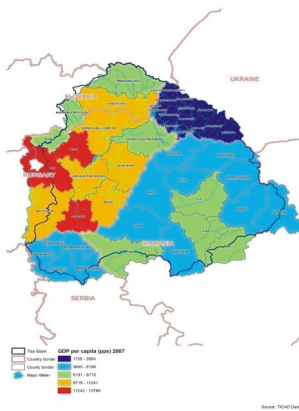
Programme co-funded by the EUROPEAN UNION



Tisa Catchment Area Development (SEE A/638/4.2/X—TICAD)

Project funded by the South East Europe Transnational Cooperation Programme
Transnational partnership between institutions from Hungary, Romania, Serbia, Slovakia, and Ukraine
Lead partner: VÁTI (Hungary)

2009-2012





2013

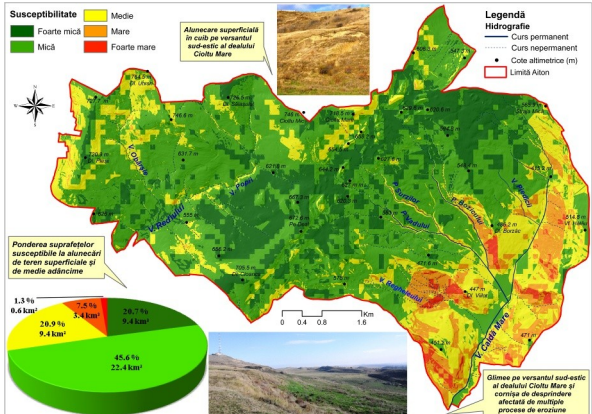
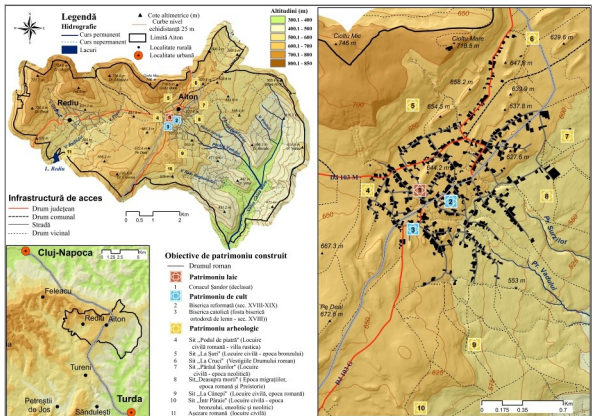
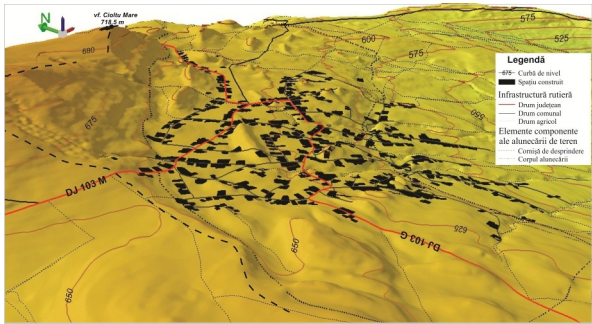
POMPEI COCEAN
Coordonator

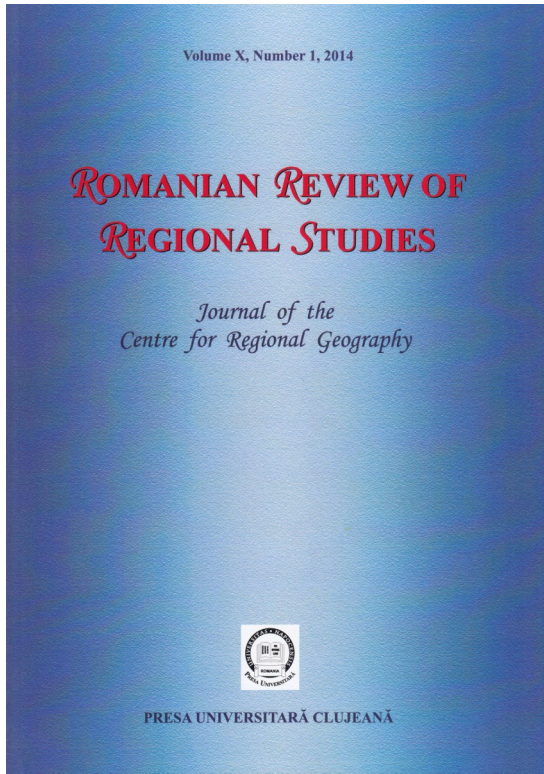
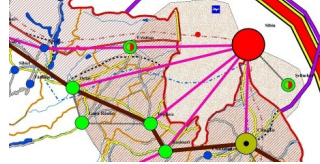
STRATEGIA DE DEZVOLTARE
A COMUNEI AITON



RISOPRINT
2014

Development Strategy of the Commune of Aiton
Beneficiary: Commune of Aiton Mayor's Office





- Semiannual, peer-reviewed and open access scholarly journal, accredited and ranked in the **B+** category by the National University Research Council (CNCSIS), in 2011.
ISSN (print): 1841-1576 | ISSN-L: 1841-1576 | ISSN (online): 2344-3707
- Indexed in the following databases and directories: Academic Journals Database, CABI, DOAJ, DRJI, EBSCO-CEEAS, Electronic Journals Library, Genamics, Index Copernicus, InfoBase Index, OAJSE, Open J-Gate, ProQuest, SCPIO, ULRICHSWEB, Worldcat
- **Website:** rrrs.reviste.ubbcluj.ro



ABOUT US

Highlights

[2014] Working meeting with top-level experts from Europa Nostra and the European Investment Bank Institute (EIBI) on the sustainable development of Roşia Montană, selected in 2013 as one of *The 7 Most Endangered Sites* in Europe

[2014] Lecture visit from Professor Jean-Marie Miossec, Paul Valéry University, Montpellier, France and book launching of “*Rivages d’Europe. Personnalité et avenir d’un continent ouvert*”

[2014, 2012] Working visit from the Hungarian Academy of Sciences, with the participation of Professor Horváth Gyula, Pécs, Hungary

[2014, 2012, 2010, 2008, 2006, 2004]

Organisation of the International Conference on Regional Disparities

Website: <http://georeg.conference.ubbcluj.ro>



[2013] Co-organisation of “*Brazilian Evenings*”, a scientific event organized in collaboration with the Brazilian Cultural Centre “Casa do Brasil” within Babeş-Bolyai University and the Centre for the Study of Territorial Development

[2013] Lecture visit from Professor Jandir Ferrera de Lima, Universidade Estadual do Oeste do Paraná, Brazil

[2013] Co-organisation of the National Conference on “*Regionalization and Regional Policies*”, organized by the Institute of Development Research within “Constantin Brâncuşi” University of Târgu-Jiu, in collaboration with the Romanian Academy and the Centre for Regional Geography

2003



2010



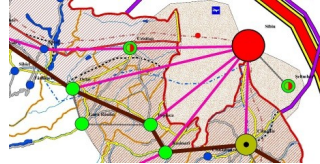
2012



BABEŞ-BOLYAI UNIVERSITY | FACULTY OF GEOGRAPHY

5-7 CLINICILOR STREET, CLUJ-NAPOCA, 400006, ROMANIA

Tel./fax: + 40 264 597 570 | E-mail: cgr@geografie.ubbcluj.ro | <http://centre.ubbcluj.ro/cgr>



[2012] Participation of the representatives of the Centre for Regional Geography at the working meeting in Debrecen in order to establish a collaboration agreement on the Tisa Catchment Area development

[2012] Participation as member in the *Consultative Committee for Regional Development (CCDR)* and the *Consultative Committee for Territorial Cohesion (CCCT)* for the elaboration of the 2014-2020 programming documents on regional development and territorial cohesion in Romania

[2011] Co-organisation of the International Conference on “*European Economic Recovery and Regional Structural Transformations*”, in collaboration with the Romanian Regional Science Association, Babeş-Bolyai University and the North-West Regional Development Agency

[2010] Lecture visit from Professor Jean-Marie Miossec, Paul Valéry University, Montpellier, France

[2010] Organisation of an International Workshop on “*Integrated Territorial Analysis*”, with the participation of four members of the Association of American Geographers (Audrey Kobayashi, Lisa M.B. Harrington, Mark W. Rosenberg, George W. White)

[2008] Co-organisation of the International Conference on “*Demographic Changes in the Time of Industrialisation (1750-1918). The Example of the Habsburg Monarchy*”, in collaboration with the Centre for Population Studies within Babeş-Bolyai University, “Karl Franzes” University of Graz and the Austrian Library

2012



2013



2014



BABEŞ-BOLYAI UNIVERSITY | FACULTY OF GEOGRAPHY

5-7 CLINICILOR STREET, CLUJ-NAPOCA, 400006, ROMANIA

Tel./fax: + 40 264 597 570 | E-mail: cgr@geografie.ubbcluj.ro | <http://centre.ubbcluj.ro/cgr>



Contact address

Centre for Regional Geography

5-7 Clinicilor Street, 400006, Cluj-Napoca, Romania

Tel./fax: + 40 264 597 570

E-mail: cgr@geografie.ubbcluj.ro

Website: <http://centre.ubbcluj.ro/cgr>

